



PAMAS S4031 GO WG

Portable particle counting instrument for water glycol based hydraulic fluids

Particle counter for the remote on-site analysis of fluid samples – pressureless sampling and up to 420 bar system pressure testing including the following fluids:

- MacDermid Oceanic HW 540
- MacDermid Oceanic HW 443
- MacDermid Oceanic HW 443 R
- MacDermid Pelagic 100
- Castrol Transaqua
- Houghton Aqualink 300F
- Houghton Aqualink 325F
- Houghton Aqualink HT-804F
- Water and chemicals for injection



PAMAS S4031 GO WG

Portable particle counting instrument for water glycol based hydraulic fluids



Product features

- Robust & convenient design
- Dust and splash-proof
- Lightweight only 8 kg
- Suitable as cabin luggage
- Customizable measurement analysis settings
- Intuitive operation via touch screen
- Automatic sample flow and volume control by wear resistant ceramic piston pump
- 32 freely adjustable size channels
- Measurement from pressureless up to 6 bar/420 bar system pressure, depending on the version
- Use of any sample vessel
- Internal data storage of more than 4,000 measurements
- Display of actual and saved measurement results and printed via integrated thermo printer
- Same measurement accuracy as a laboratory unit
- Multilingual menu navigation
- Battery running time of more than 4 hours

Accurate single particle counting technique

The volumetric sensor cell and sophisticated optical components guarantee high resolution and accuracy. Every particle passing through the sensor is detected. This design ensures the true measurement of even ultra clean fluids.

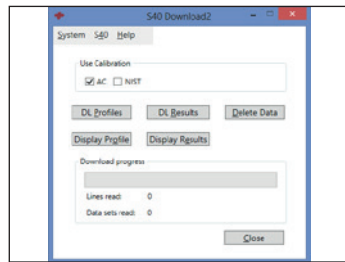
Calibration

The system is calibrated according to the international standard ISO 21501-3 or ISO 11171. These calibrations are traceable to NIST standards. Historical calibrations including ISO 4402 are still available on request.

Software

PAMAS Download

The PAMAS S4031 comprises of the software tool PAMAS Download. Transfer of the measurement results from the instrument is via a USB cable connected to a PC/laptop. The results can then be further processed, e.g. using Microsoft Excel®.



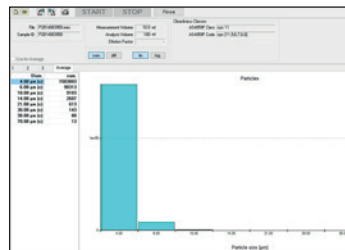
Software PAMAS Download

Software

PAMAS PMA

Using the optional Software PAMAS PMA, the portable PAMAS S4031 can be used via a PC like a laboratory unit.

- User-friendly setting of the measurement parameters
- Report and analysis of measuring data
- Measurement report including cleanliness codes and sample parameters in numerical and graphical presentation
- LIMS integration possible



Software PAMAS PMA

Reporting of measurement results

according to the following standards, depending on the calibration: ISO 4406, SAE AS4059, NAS 1638, GOST 17216, GJB 420B, CHARN, as well as raw data.

When using the software PAMAS PMA, the measurement results can additionally be reported according to GJB 420A, NAVAIR 01-1A-17, SAE 749D, and ISO 11218.2.

Versions

- **PAMAS S4031 GO WG** for water glycol based hydraulic fluids and fresh water
- **PAMAS S4031 GO WG Seawater** for water glycol based hydraulic fluids, fresh water, and seawater
- **PAMAS S4031 GO WG Corrosive** for water glycol based hydraulic fluids, fresh water, seawater, and chemicals



Schultertasche PAMAS GO

The custom-fit shoulder bag provides extra space for accessories.

Technical data

- 32 freely adjustable size channels
- Touchscreen
- Integrated thermoprinter
- Data transfer: ASCII Code, USB interface
- Power supply: 100–240 V, 50–60 Hz
- Battery running time approx. 4 hours

Volumetric Sensors PAMAS HCB-LD-50/50

Available size ranges:

- 1–200 µm (ISO 21501-3)
- 4–70 µm(c) (ISO 11171)
- 2–100 µm (ISO 4402)

Max. particle concentration: 24,000 P/ml* at 25 ml/min**

PAMAS HCB-LD-25/25

Available size ranges:

- 1–200 µm (ISO 21501-3)
- 1–100 µm (ISO 4402)
- 4–70 µm(c) (ISO 11171)

Max. particle concentration: 120,000 P/ml* at 25 ml/min**

Other sensors for larger particle sizes or higher concentrations are available on request.

Size

420 mm x 330 mm x 220 mm (W x H x D)

Weight

8 kg

Case protection


IP 64

- * Coincidence error of 7.8 %
- ** Other flow rates are available on request.



Management System
ISO 9001:2015

www.tuv.com
ID 9105038017

 **Sintech Scientific (S.E.A.) Pte Ltd**
No. 194 Pandan Loop #04-11
Pantech Business Hub
Singapore 128383
Tel : 65-67790007
Fax : 63520877, 63520885
Email : sales@sintechscientific.com
Website : www.sintechscientific.com

PAMAS HEAD OFFICE • Dieselstraße 10 • D-71277 Rutesheim • Phone +49 7152 99 63 0 • Fax +49 7152 99 63-32 • info@pamas.de

Finden Sie Ihre lokale PAMAS-Niederlassung oder Vertretung unter www.pamas.de