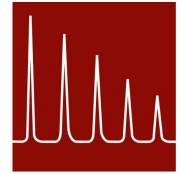


# ALNG-6000 Automatic/Manual Sampling System

V1.0  
24/08/22

**AGC**  
INSTRUMENTS  
Gas Chromatography since 1965



## Introduction

The reporting of LNG components is a very important document for custody transfer (such as loading, unloading, and shipment receipts). Normally the components of LNG are analysed by a Gas Chromatograph (GC) in laboratories, and it is very difficult to get repeatable and representative samples from the pipeline. The ALNG-6000 Automatic/Manual Sampling System delivers the best solution for taking representative LNG samples.

## Sampling System Overview

The ALNG-6000 Automatic/Manual Sampling System is designed to take representative Liquid Natural Gas (LNG) samples from a pipeline using a unique technology which allows a complete gasification of the sample. This in turn fills up the sampler with gaseous Natural Gas. This innovative sampling system has solved some difficult problems such as samples mixed with both gas and liquid, unevenly gasified samples...etc. As a result, the end user can obtain high representative samples for laboratory analysis using the ALNG-6000 Automatic/Manual Sampling System which is in compliance with the ISO 8943 standard.

## Characteristics

- One-click Sampling
- Easy to Operate
- Low Thermal Conductivity
- Nano Volume Sample Probe
- Fast Sampling
- Low Consumption of LNG in sampling process
- High Representative Sample
- Multi-bottle Sampling
- Function of Sample Vacuum and Sample Replacement

## Specifications

- LNG Pipeline Pressure: Max 2 MPa (20 Bar)
- Temperature: < -196° Celsius
- Sample Capacity: 1-3 Bottles
- Sample Probe Mounting: Refer to the Order Parameters

## Customisation Options

- Probe Material: 316SS (Customised as option)
- Vent: Refer to the Order Parameters (Customised as option)
- Purge Mounting: Refer to the Order Parameters (Customised as option)
- Power Supply: 220VAC/50Hz 1500VA
- Hazardous Area Approvals: Ex d eibpy IICT3 Gb
- Ambient Temperature: -20 to +50° Celsius
- Sampling Time: < 30 min (Hot Start)
- Sampling Pressure: 0.5MPa (5 Bar)



## Requirements

- N2: 0.4-1MPa, 2m3/ea.  
Oil and Water Free; Dew Point < -50° Celsius
- Voltage: 220VAC/50Hz, 1500VA



## Other Parameters

Hazardous Area		
1	Zone 1	
2	Zone 2	
Voltage		
1	110V-120V	
2	220V-240V	
Purge Gas		
1	N2	
2	Other Gas (Argon, etc.)	
Sample Probe mounting: (Probe length according to the distance between inner shell pipe and flange)		
1	ANSI 1" 150lbs	
2	ANSI 1" 300lbs	
3	ANSI 2" 150lbs	
4	ANSI 2" 300lbs	
5	Other size (customise as option)	
Vent Connections		
1	ANSI 1" 150lbs	
2	3/8" cutting ferrule	
3	Other size (customise as option)	
Purge Connections		
1	ANSI 1" 150lbs	
2	3/8" cutting ferrule	
3	Other size (customise as option)	
Sample Volume/Bottle		
1	500mL 1 bottle	
2	500mL 2 bottle	
3	500mL 3 bottle	
4	Other size (customise as option)	
Distance between flange and inner shell pipe (customer specified):		m
Pipe Pressure (customer specified):		MPa
Pipe Temperature (customer specified):		°C
Ambient Temperature (customer specified):		°C
ALNG-6000-		

## Aftersales Care

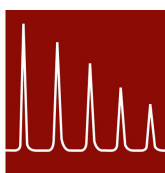
AGC Instruments are committed to providing and maintaining quality systems from customer liaison to technical knowledge through to System Design and Delivery. With each system manufactured under the auspices of ISO 9001:2015, guaranteed applications are achieved with the utmost quality. To coincide with this, we believe that our After Sales Support to the customer is one of the most important services we can offer. Each Distributor has been carefully selected and trained to ensure our customers receive the best possible service. Furthermore, online customer support and direct support are available to deliver a comprehensive support package.


## Contact Details

AGC Instruments Ltd.  
Unit 2, Shannon Free Zone West,  
Shannon,  
Co. Clare, V14 PX03,  
Ireland.

**Telephone:** +353 61 471 632  
**Fax:** +353 61 471 042  
**Email:** [systems@agc-instruments.com](mailto:systems@agc-instruments.com)  
**Website:** [www.agc-instruments.com](http://www.agc-instruments.com)

**AGC**  
**INSTRUMENTS**  
Gas Chromatography since 1965



 **Sintech Scientific (S.E.A.) Pte Ltd**  
No. 194 Pandan Loop #04-11  
Pantech Business Hub  
Singapore 128383  
Tel : 65-67790007  
Fax : 63520877, 63520885  
Email : [sales@sintechscientific.com](mailto:sales@sintechscientific.com)  
Website : [www.sintechscientific.com](http://www.sintechscientific.com)