

Laboratory Shaker (Vertical & Horizontal Shaking)

Vertical / Horizontal / Rotary / Double-sided vertical shaking motion

SA300/320/400

Shaking speed 20~300rpm (SA300/400) 20~210rpm (SA320)

Shaking width 40mm

The SA300 achieves two dimensional shaking (horizontal and vertical), while the SA320 enables rotary shaking and SA400 is double-sided vertical shaking. All models are efficient in extraction, culture and mixture stirring of samples.

- Stable turns from low to high speed can be obtained
- Compact and equipped with a powerful shaking load
- Easy-to-use dial settings for shaking frequency and digital displays.
- Possible to switch between timer operation and continuous operation
- Various holders can be easily attached and removed and are extremely durable (Option)

SA300/320

- The main unit shakes vertically, but it can be laid on the side to shake horizontally

SA400

- 6 pieces of 1 liter liquid sample holder and 4 pieces of 2 liter liquid sample holder can shake simultaneously
- Double sided shaking possibility



SA320 with test tube holder



SA300 with separating funnel holder

*Holders & glasswares sold separately



SA320 with separating funnel holder



SA400 with separating funnel holder

*Holders & glasswares sold separately

Specifications

Production code	232017	232018	232010
Model	SA300	SA320	SA400
Shaking method	Horizontal / Vertical shaking	Horizontal / Vertical rotary shaking	Double sided vertical shaking
Max. number of separating funnel	100ml×5, 300ml×4, 1000ml×3 200ml×4, 500ml×4, 2000ml×2		100ml×10, 300ml×8, 1000ml×6 200ml×8, 500ml×8, 2000ml×4
Shaking speed: horizontal	20~300 rpm	20~210 rpm	None
Shaking speed: vertical	20~300 rpm	20~210 rpm	20~300 rpm
Speed setting display	Dial setting		Dial setting / Digital display
Timer	Dial setting 0~60 min. (minimum scale 5 min.). Continuous switching function		
Motor	DC motor 90W		
External dimensions	W460×D460×H423		W520×D460×H483
Weight	Approx. 40kg		Approx. 39kg
Power source (50/60Hz)	AC115V / AC220V Single phase		AC115V / AC220V Single phase with step-down transformer
Included accessories	Fuse×1, Carbon brush×1		

Horizontal Shaking



Rotary + Horizontal Shaking



Vertical Shaking



Rotary + Vertical Shaking



Operational Accessories (Glasswares are not included)

* Operational accessories are needed for SA300/320/400 operation depending on glassware type. These items are not included with the main unit and must be ordered separately.

Centrifugal tube holder



For all models
Horizontal / Vertical shaking

Product code	232087
Specifications	Dia. 16~35mm Length 110~130mm 18 pcs.

Test tube holder



For SA300/320
Horizontal shaking

Product code	232086
Specifications	Dia. 16.5~18mm Length 160~190mm 18 pcs.

2000mL Separating funnel holder



For all models
Vertical shaking

Product code	232089
Capacity	50ml 100~1000ml 2000ml

Separating funnel holder



For all models
Vertical shaking

Product code	232096
Capacity	100~1000ml

* Not applicable for squibb-type separating funnels (500-1000mL)

Mounting stage



For SA300/320
Horizontal shaking

Product code	Capacity	No. of pcs.
232095	100ml	28
	200ml	19
	500ml	14
	1L	9

Erlenmeyer flask holder clamp



For SA300/320
Horizontal shaking

Product code	Capacity	No. of pcs.
232062	100ml	10
232063	200ml	9
232064	300ml	5
232065	500ml	4
232066	1L	2

* Mounting stage sold separately

Diagonal rack



For SA300/320
Horizontal shaking

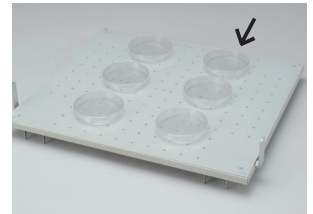
Product code	Capacity
232067	100ml
232068	200ml
232069	300ml

Diagonal test tube holder

Product code	Size	No. of pcs
232080	ø12mm	50
232081	ø16.5mm	20
232082	ø18mm	20

* Mounting stage sold separately

Non-skid sheet

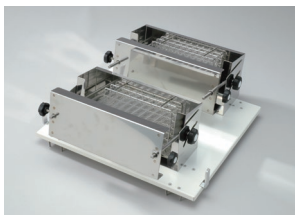


For SA300/320
Horizontal shaking

Product code	232071
Dimensions	Thickness 1mm W450 x D396mm

* Mounting stage sold separately

Test tube rack holder



For SA300/320
Vertical horizontal shaking

Product code	232088
Specifications	Max. test tube rack W238×D121×H105mm 2 lines

* Mounting stage is included

Erlenmeyer flask holder



For SA300/320
Horizontal shaking

Product code	232097
Capacity	Adjustable 100~1000ml

Two layer spring shaking rack



For SA300/320
Horizontal shaking

Product code	232079
Specifications	320 pcs. of ø16 test tube (Pitch 20mm)